

Canon

DR-2050C

 Image Filing
Systems



DR-2050C

IMAGE FILING SYSTEMS

DESIGNED FOR TIGHT BUDGETS AND LIMITED WORKSPACES

Whether you're running a small business or managing distributed imaging applications, you need to trim the fat in technology investments. The Canon DR-2050C Color Scanner suits both tight budgets *and* tight spaces.

Making it Easier to Convert Vital Documents

Don't let the small footprint of the DR-2050C fool you. It offers high-quality image output, with resolution of up to 600 dpi for all your 24-bit color, grayscale, and black-and-white scanning needs. With scanning speeds of up to 20 pages or 40 images per minute*, the DR-2050C was built to provide incredible throughput for high-performance duplex scanning. Superior speed and exceptional value are just the beginning of what makes Canon's DR-2050C scanner a leader in its class.

Productivity enhancement features truly set the DR-2050C apart from other workgroup scanners. Up to 100 user-



Reliability Comes Standard

The DR-2050C scanner incorporates Canon's renowned, high-precision roller system that helps deliver smooth, jam-free feeding. Whether scanning single-page documents or multiple sheets of mixed document sizes and thickness, the DR-2050C scanner offers uninterrupted performance with one of the most reliable feeding systems in its category. It even handles multipart forms with a simple flip of the Bypass Switch for convenient, non-separation feeding.

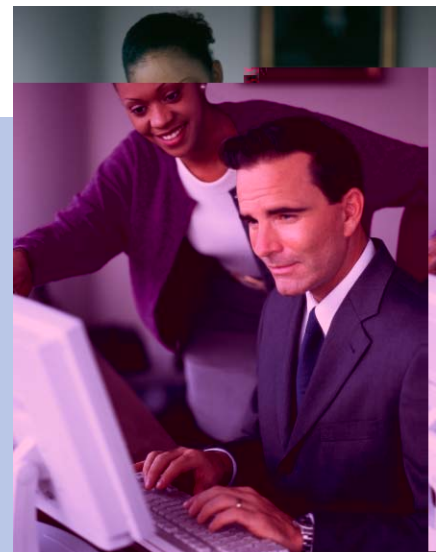
More Than a Scanner, It's a Document Imaging System

Bundled with CapturePerfect® 3.0, Adobe® Acrobat® 7.0 Standard, and OmniPage®SE, you get more than a scanner when you purchase the DR-2050C. Canon's CapturePerfect application is loaded with unique, easy-to-use features, making image capture a more user-friendly experience. Offering a number of convenient scanning options, you can save, print, or e-mail scanned images with one-click simplicity. You can even project scanned images through a projector for business presentations. The Scan Area setting enables you to capture only the image data you need. CapturePerfect also provides flexible editing functions that allow you to insert or add images to an existing file, replace or delete specified pages, and combine and save multiple file formats.

Built-in OCR capabilities help make it easy to create searchable PDF files and generate file name indexing with CapturePerfect. Also, once scanned, the PDF security settings allow you to encrypt sensitive documents or control printing and editing rights to help you meet industry security requirements. Designed with a high-speed USB 2.0 interface and bundled with the latest document imaging software, you'll find that the DR-2050C is a small investment worth making.

Add High Performance and Productivity to Your Busy Office

Leave it to Canon to provide your office with innovative technology at an affordable price. The DR-2050C gives you fast, high-performance duplex scanning in a compact, sleek package. Not only will you enjoy the ease-of-use built into the DR-2050C color scanner, but you'll soon discover that it's time and money well spent.



DR-2050C

DR-2050C Specifications

Type:	Compact Color Document Scanner	Dropout Color:	RGB	Power Consumption:	Max. 13W (Energy Saving Mode: 4W or less)
Item Number:	0433B002AA	Optical Resolution:	600 dpi	Daily Duty Cycle:	Approx. 700 Scans
Document-feeding:	Automatic or Manual	Output Resolution:	100/150/200/240/300/400/600 dpi	Options:	Exchange Roller Kit (Item No.: 7982A001) Carrying Case
Document Size		Scanning Speeds* (LTR Portrait @ 200 dpi)	Simplex Duplex		
Width:	2.1" – 8.5"	Black and White:	20 ppm 40 ipm		
Length:	2.8" – 14"	Grayscale:	20 ppm 40 ipm		
Weight		Color:	7 ppm 12 ipm		
Automatic-feeding:	14 - 32 lb. Bond	Color @ 150 dpi:	10 ppm 20 ipm		
Manual-feeding:	11 - 40 lb. Bond	Interface:	USB 2.0		
Feeder/Stacker Capacity:	50 Sheets (Letter)	Scanner Drivers:	For Windows® 98/2000/Me/XP		
Grayscale:	8-bit	Bundled Software:	ISIS/TWAIN Driver, CapturePerfect 3.0, Adobe Acrobat 7.0 Standard, OmniPage SE		
Color:	24-bit	Dimensions (H x W x D):	7.8" x 11.7" x 3.9"		
Scanning Element:	Contact Image Sensor (CMOS)	Weight:	Approx. 5 lb.		
Light Source:	RGB LED				
Scanning Modes:	Simplex, Duplex, Color, Grayscale, Black and White				

*Examples based on typical settings, rated in pages/images per minute with letter-sized documents at 200 dpi unless specified. Actual processing speeds may vary based on PC performance and application software.

NOTE:
The DR-2050C has been tested for compatibility with many of the industry's leading document management solution providers. Please visit the scanner's product page on Canon U.S.A.'s Web site at www.usa.canon.com for a comprehensive compatibility listing.

© 2005 Canon U.S.A., Inc. All rights reserved.

As an Energy Star® Partner, Canon U.S.A., Inc. has determined that this product meets the Energy Star® guidelines for energy efficiency. Energy Star and the Energy Star certification mark are registered U.S. marks. ISIS is a registered trademark of Captiva Software Corporation. Adobe and Acrobat are registered trademarks of Adobe Systems Incorporated in the United States and/or other countries. OmniPage SE is a registered trademark of ScanSoft, Inc. or its affiliates in the United States and/or other countries. Windows is a registered trademark of Microsoft Corporation in the United States and/or other countries. Canon and Canon Know How are registered trademarks of Canon Inc. in the United States and may also be registered trademarks in other countries. IMAGEANYWARE is a service mark of Canon U.S.A., Inc. in the United States. All referenced product names and other marks are trademarks of their respective owners.

All specifications are subject to change without notice.

Canon KNOW HOW®

1-800-OK-CANON
www.usa.canon.com

Canon U.S.A., Inc.
One Canon Plaza
Lake Success, NY 11042

0052W028

0605-2050C-20M-ATM



printed on recycled
paper in the u.s.a.

Capture Perfect

